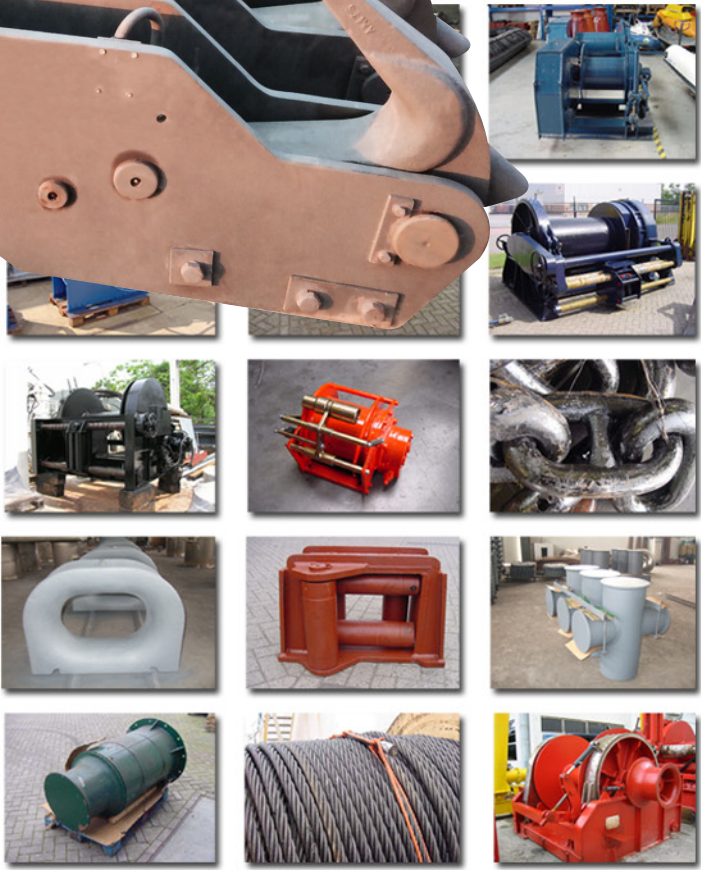
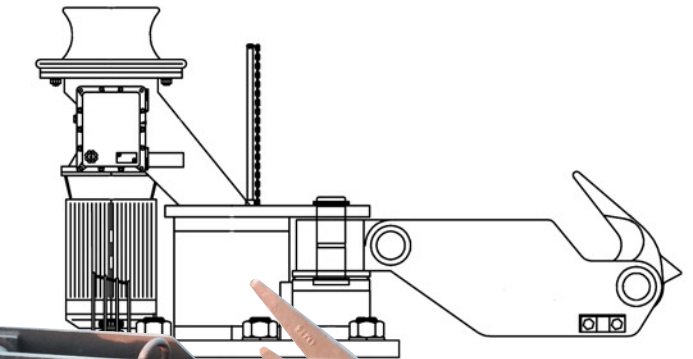


MES

Marine Equipment Services by

Twin and Triple Quick Release Mooring Hooks



Twin and Triple Quick Release Mooring Hooks

GENERAL PERFORMANCES

The mooring hooks enable ship mooring lines to be secured safely and with a minimum of effort. All hooks are able to move both vertical and horizontal planes and each one is designed to be released independently from the other.

Movements, including quick release, will not damage the berth or dolphin structure in any way.

Adopting a two step activity to release the hooks is preventing accidental release.

The quick release hooks are capable of releasing the mooring lines whether slack or under full safe working load (SWL).

Operation of the hooks is completely sprak free.

Each hook member will be able to accept either wire of fibre mooring lines.

Elastomeric shock absorbing impact blocks are installed to neutralise the energy imparted into the system at quick release.

VERTICAL HOOK RANGE FROM THE HORIZONTAL : $-5^{\circ}, +45^{\circ}$

HORIZONTAL HOOK RANGE DOUBLE MOORING UNIT: $+90^{\circ}/-45^{\circ}, +45^{\circ}/-90^{\circ}$

HORIZONTAL HOOK RANGE TRIPLE MOORING UNIT : $+90^{\circ}/-45^{\circ}, +45^{\circ}/-45^{\circ}, +45^{\circ}/-90^{\circ}$

Following manufacturing, each hook is tested as follows

- PROOF LOAD AT 1.5 TIMES THE SWL
- RELEASE TEST AT SWL

Pressure grease fittings are used on all pivots and rotation points.

Manual operation of the quick release hooks is possible with a maximum effort of 15/30 Kg at full SWL.

RESET FORCE WILL BE APPROX 20 KG TO BE APPLIED IN A POSITIVE 2 STEP FUNCTION:

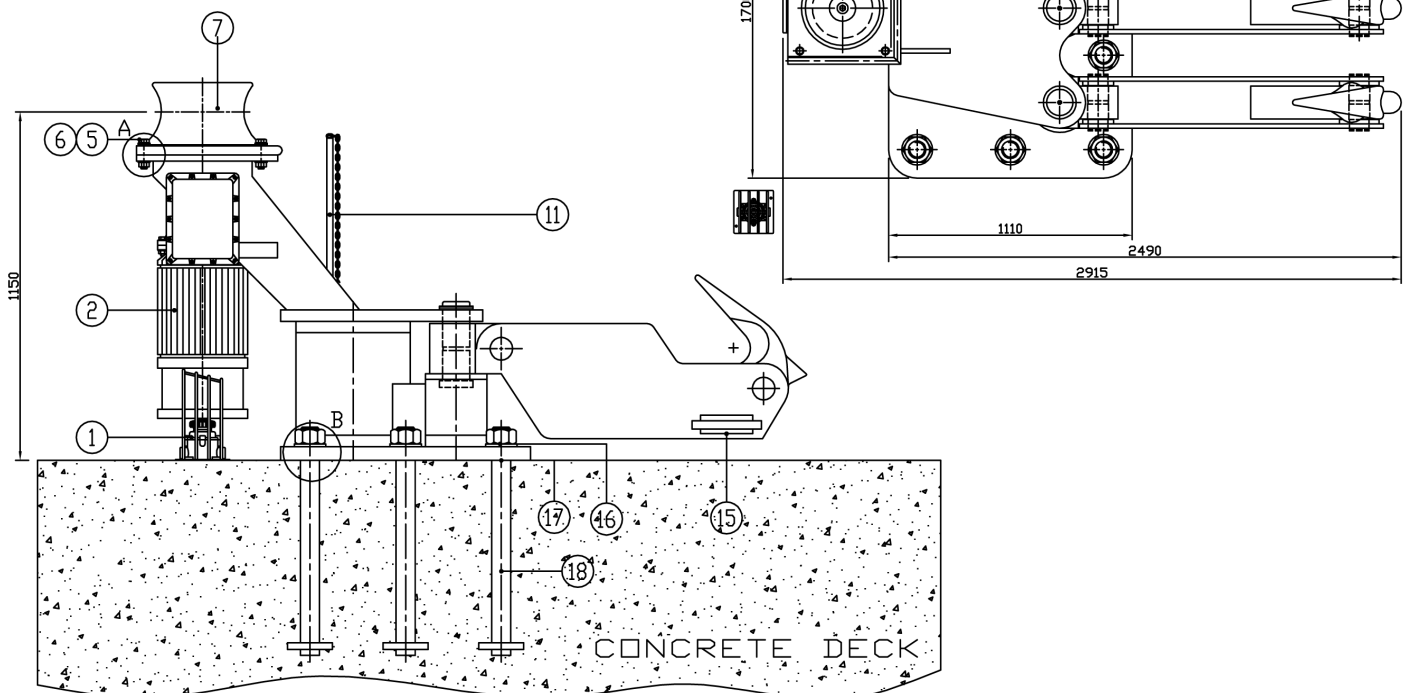
- INSERT LEVER
- PUSH LEVER TO LOCK UP THE RELEASE MECHANISM

All hooks are of the fully de-mountable type. The units are self supporting to prevent the open hook from touching the deck.

Nylon rollers and/or sliding plates are NOT used.

Identification plates will be provided on each assembly indicating the name of the manufacturer, date of manufacturing, model number and safe working load capacity of each hook and of the total assembly.

The Quick Release Mooring Hooks are specifically designed for towing with nylon and / or other p.p. ropes as well as steel / wire rope.



Marine Equipment Services b.v.

Phone +31 (0)183 50 20 52, Cellphone: +31 (0) 653 266 524, Fax +31 (0)183 50 16 38
E-mail jym@mestrading.com - Internet www.mestrading.com