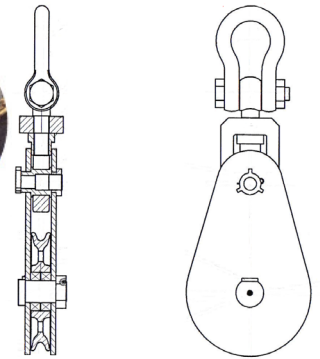


MES

Marine Equipment Services by

Snatch Block



BUREAU VERITAS Marine & Offshore Division

CERTIFICATE FOR LOOSE GEAR & LIFTING ACCESSORIES

Classification Rules for the Classification of Steel Ships (Jul. 2014)

Purchaser Requirements:
: MARINE EQUIPMENT SERVICES (B.V. (ARKEL - NLD))
: Bureau Veritas Rules for the Classification of Steel Ships (Jul. 2014)

Product description:
: Snatch blocks S series with Shackle
: PORT1418; Z19K-00 (Rev 0)

Design review:
: 2 sets

Quantity:
: 2 sets

Type of product:
: Z19K00300

Drawing No.:
: Z19K-00

Safe Working Load:
: 10 t

Test load:
: 1500 kN

Material:
: Shackle & shaft: S50A6; Heat No.: E21201418XX-G4
: 145567 - 145568

Serial No.:

Enclosures / Remarks : Nil

This certificate is issued by Bureau Veritas as per the above Classification Rules and in compliance with the applicable technical requirements therein.

Marking: : 01 10958CHN14
Last survey: : 21 Oct 2014
Surveyor: : Jack Jiang

Issuance date: : 21 Oct 2014
Office: : BV SHANGHAI

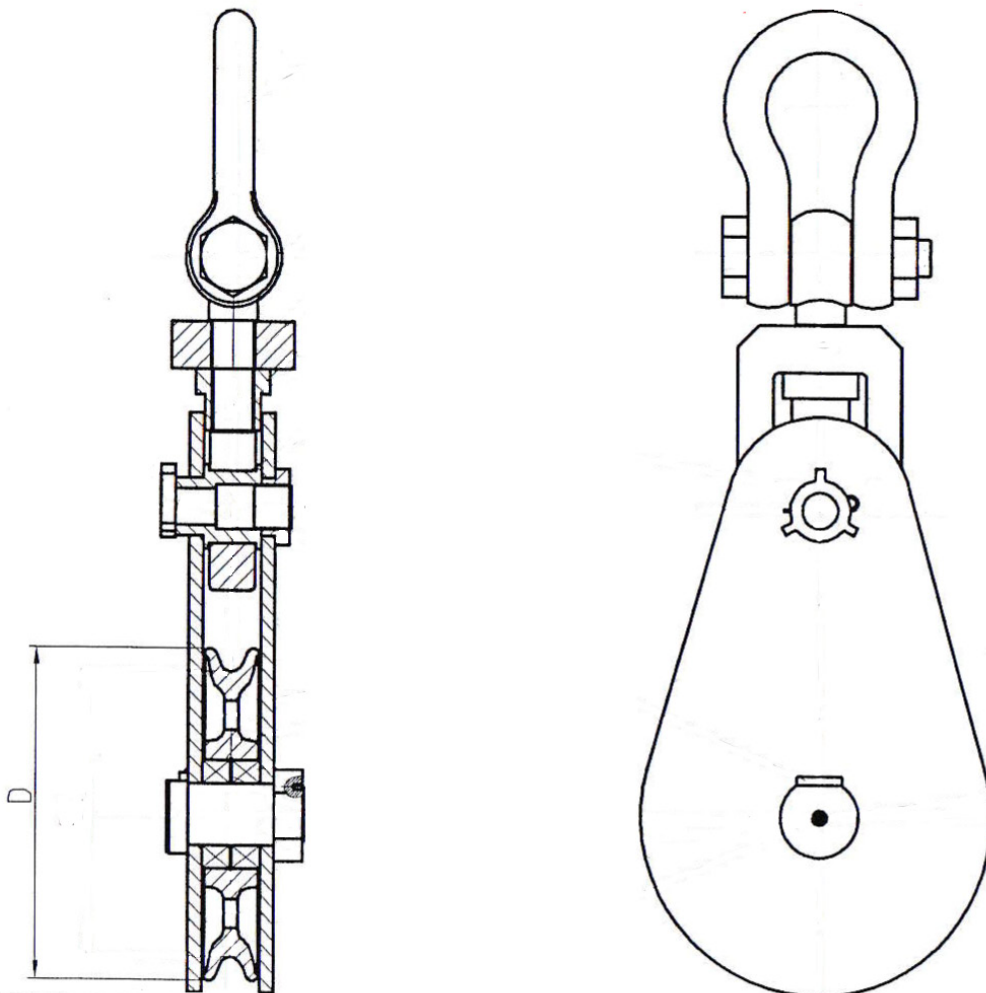


Offshore Division available on the internet site
Bureau Veritas does not warrant a claim against Bureau Veritas for any activities for

Snatch Block

Snatch Block - Steel Plate

Sheave Dia. (D)		Wire Rope Dia. (mm)	SWL (kN)	Test (kN)	Weight (kgs)
(mm)	(inch)				
405	15,94	32	300	588	115
458	18,03	38	350	686	265
600	23,62	44	500	980	440
680	26,77	52	550	1078	670
900	35,43	64	800	1568	1600



Marine Equipment Services b.v.

Phone +31 (0)183 50 20 52, Cellphone: +31 (0) 653 266 524, Fax +31 (0)183 50 16 38
E-mail jym@mestrading.com - Internet www.mestrading.com